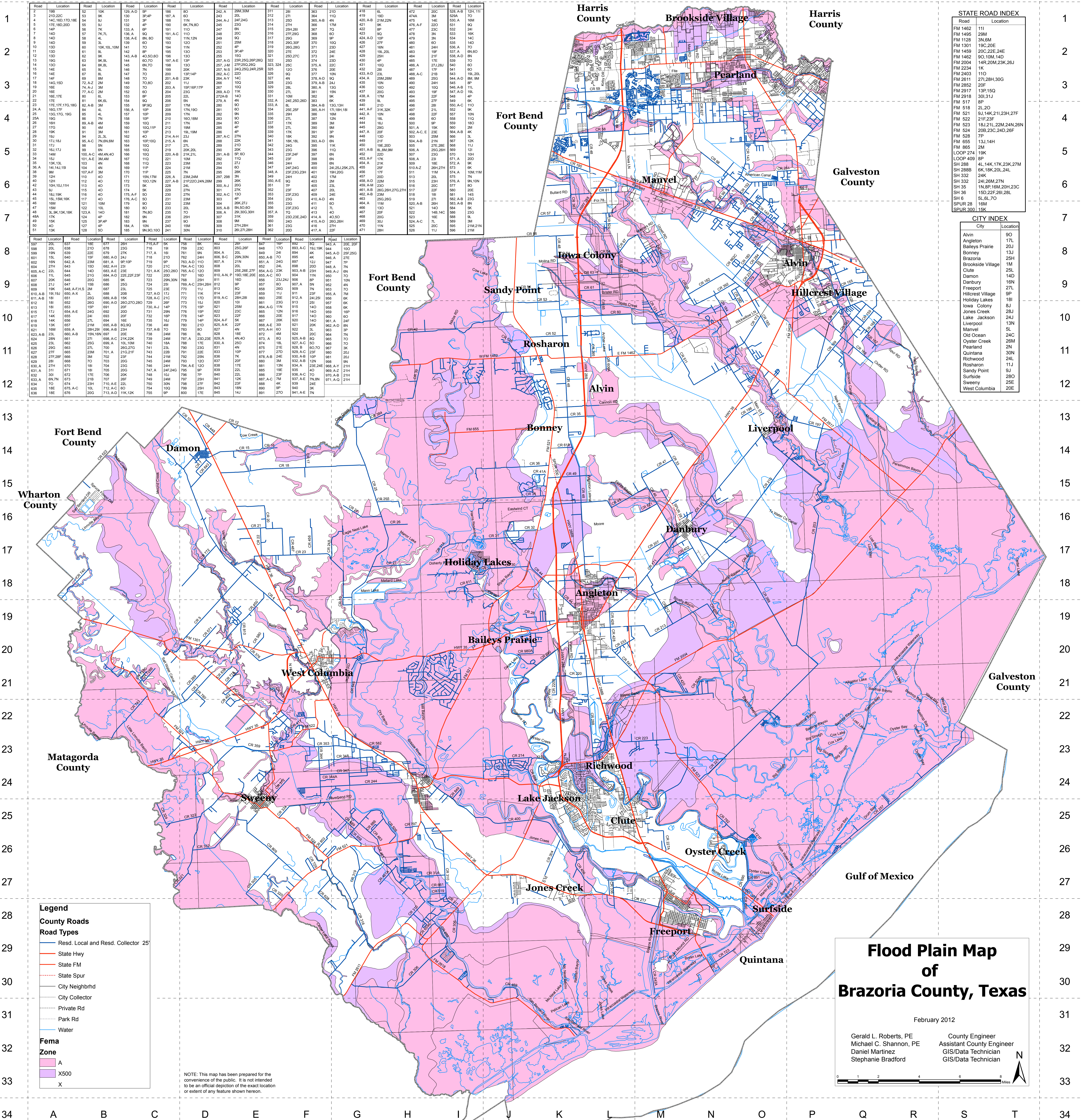


A B C D E F G H I J K L M N O P Q R S T



STATE ROAD INDEX

Road	Location
FM 1462	111
FM 1495	23M
FM 1128	3N,6M
FM 1301	19C,20E
FM 1459	20C,22E,24E
FM 1462	9O,10M,14D
FM 2004	14R,20M,23K,26J
FM 2234	1K
FM 2403	11O
FM 2611	27I,28H,30G
FM 2852	20F
FM 2917	13P,15Q
FM 2918	3O,31U
FM 517	8P
FM 518	2L,2O
FM 521	8J,14K,21I,23H,27F
FM 523	21F,23F
FM 524	18J,21I,22M,24N,26N
FM 524	20B,23C,24D,26F
FM 528	7P
FM 655	13J,14H
FM 685	2M
LOOP 274	19K
LOOP 409	8P
SH 288	4L,14K,17K,23K,27M
SH 288B	6K,18K,20L,24L
SH 332	24K
SH 332	24I,26M,27N
SH 35	11N,8P,16M,20H,23C
SH 36	15D,22F,26I,28L
SH 6	5L,6L,7O
SPUR 28	16M
SPUR 300	15K

CITY INDEX

City	Location
Alvin	9O
Angleton	17L
Baileys Prairie	20J
Bonney	13J
Brazoria	25H
Brookside Village	1M
Clute	25L
Damon	14D
Danbury	16N
Freeport	27I
Hillcrest Village	9P
Holiday Lakes	18I
Iowa Colony	8J
Jones Creek	29J
Lake Jackson	24J
Liverpool	13N
Marvel	5L
Old Ocean	24C
Oyster Creek	26M
Pearland	2N
Quintana	30N
Richwood	24L
Rosharon	11J
Sandy Point	9J
Surfside	28O
Sweeny	25E
West Columbia	20E

Legend

County Roads

Road Types

- Resd. Local and Resd. Collector 25'
- State Hwy
- State FM
- State Spur
- City Neighborhd
- City Collector
- Private Rd
- Park Rd
- Water

Fema Zone

- A
- X500
- X

NOTE: This map has been prepared for the convenience of the public. It is not intended to be an official depiction of the exact location or extent of any feature shown hereon.

Flood Plain Map of Brazoria County, Texas

February 2012

Gerald L. Roberts, PE County Engineer
 Michael C. Shannon, PE Assistant County Engineer
 Daniel Martinez GIS/Data Technician
 Stephanie Bradford GIS/Data Technician

Scale: 0 1 2 4 8 Miles

A B C D E F G H I J K L M N O P Q R S T